



# Pennsylvania Resources Council

envisioning a Pennsylvania where nothing is wasted



A Unique Approach to Scaling Drop-Off Sites

Presented by Ashley DiGregorio  
Recycling Markets & Grants Manager

# Our Mission



To lead and promote individual and collective action to prevent waste and conserve Pennsylvania's environmental resources for each generation.

Education & Outreach

Zero Waste Events & Consulting

Collection Events



# Brief Context: PRC's interventions



**Pennsylvania Resource Council to host 'traveling glass recycling bin program'**



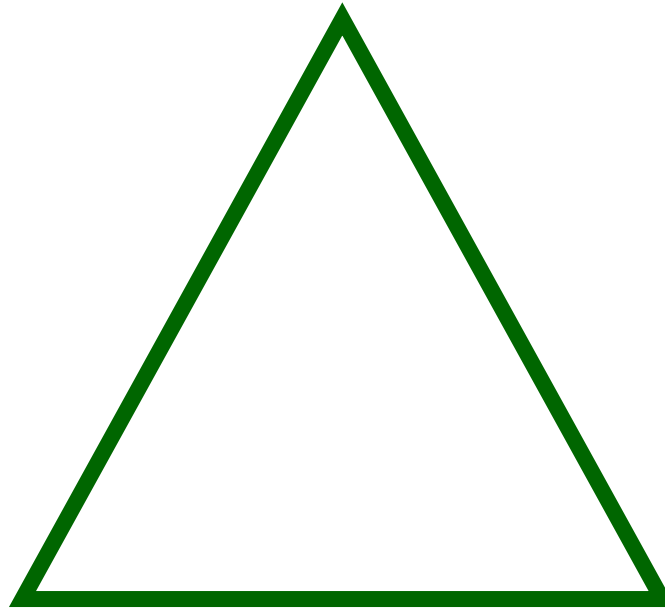
Pam Panchak/Post-Gazette

ADVERTISEMENT

- Source-separated drop-off focus
- Our Vision: Regional glass drop-off network
- First Step: Event-based collections
- Our Approach: Turnkey program coordination



# Industry Support



**Owens-Illinois:  
National  
Manufacturer**

**CAP Glass:  
Regional Glass  
Processor**



**Owens-Illinois**  
*Program Sponsor*

**CAP Glass**  
*Capital  
Equipment*

**CAP Glass**  
*Sort, Process*

**PRC**  
*Coordination,  
Outreach,  
Relationships,  
Grants*

**Michael Bros.**  
**Hauling & Recycling**  
*Transpo &  
Consolidation*

**Dormont Boro &  
Collaborative**



# Partners and Roles

## CAP Glass

- Capital Equipment (Roll-offs)



## Michael Bros. Hauling

- Consolidation Infrastructure
- Hauling support and logistics



## Dormont & Municipal Partners

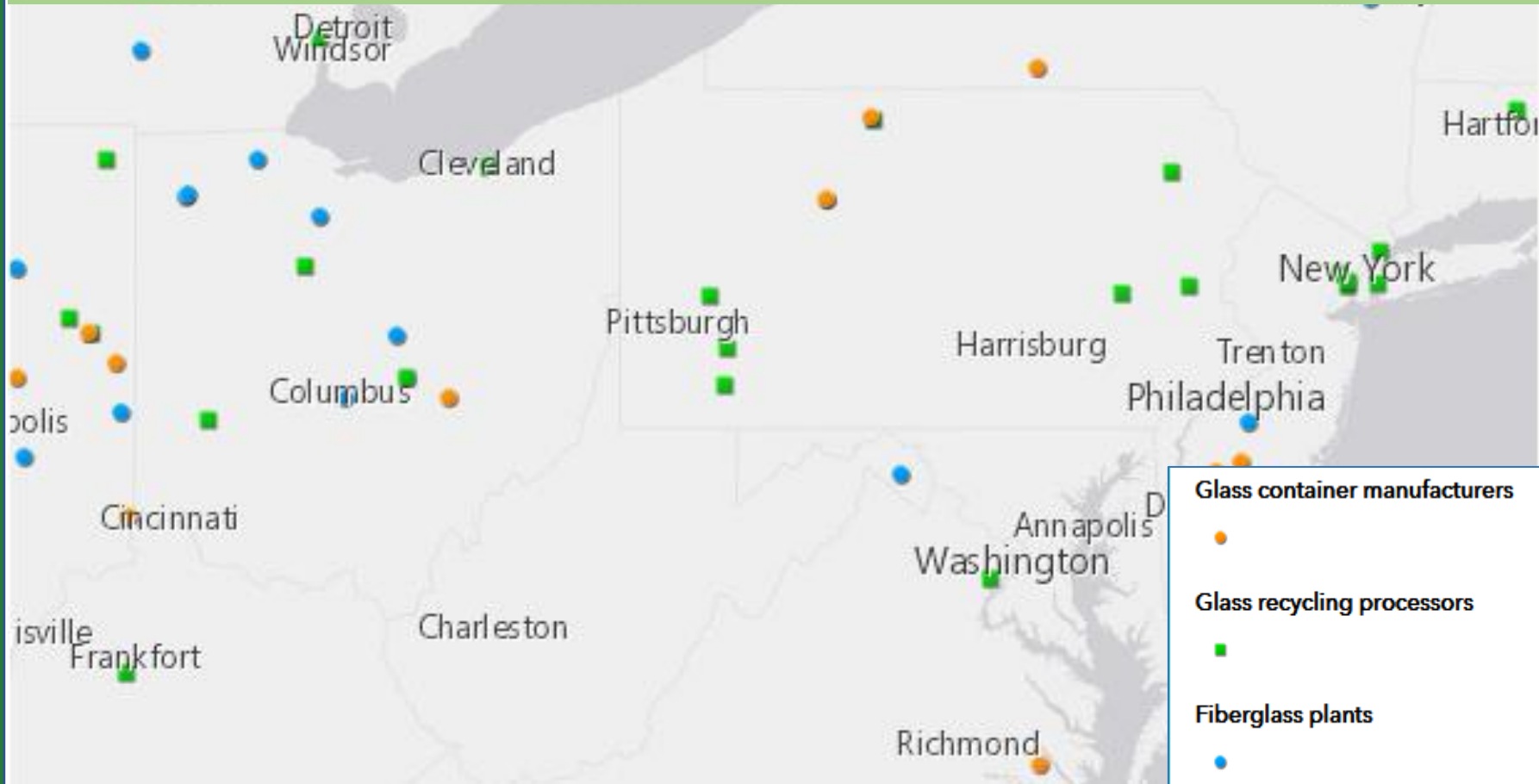
- Outreach channels, Cost sharing, Hosting of sites, Collaborative concept development

## PRC

- Education and Outreach Materials, Technical assistance, Concept Testing, Program coordination, Convener

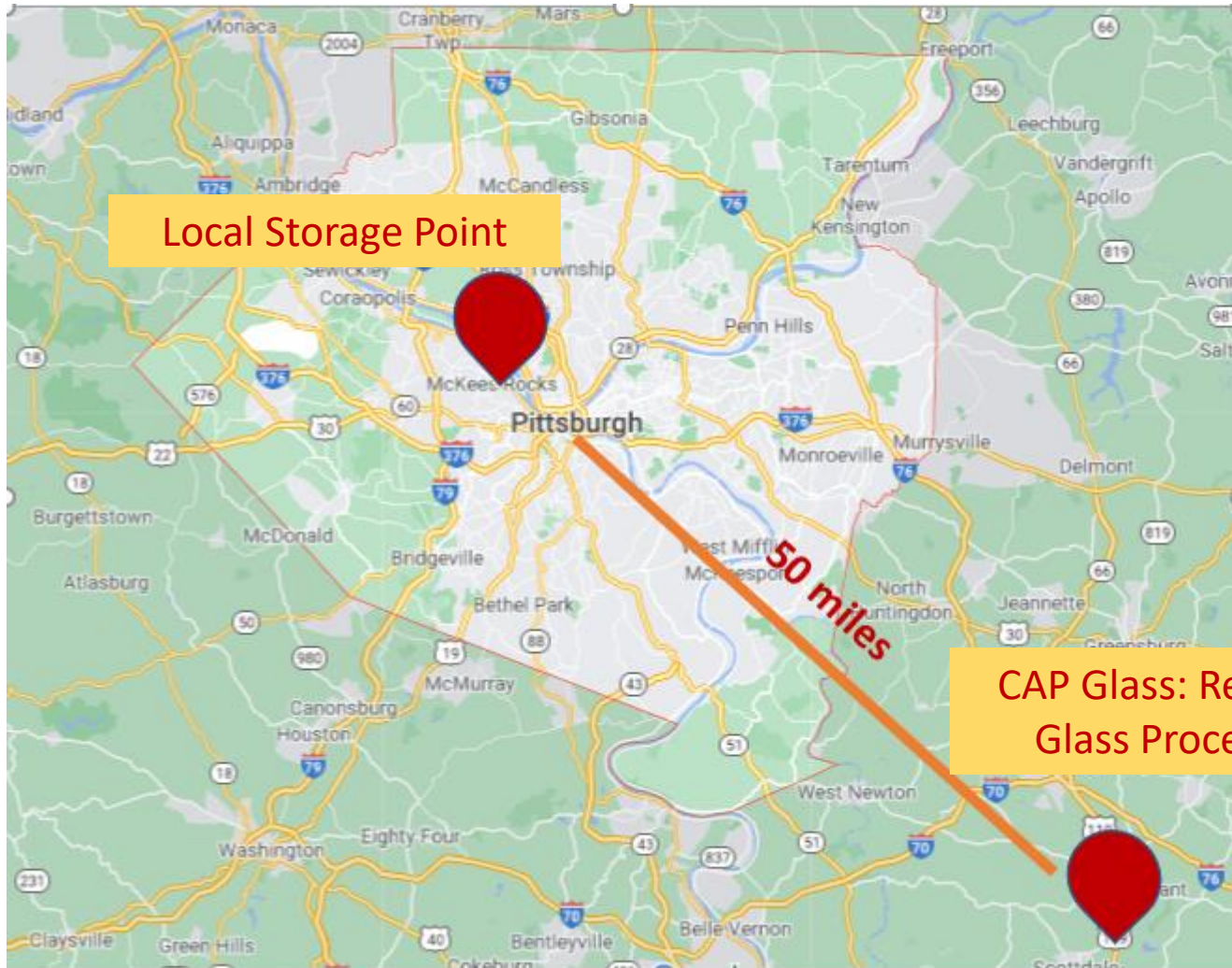


# Regional Glass-“shed”



Source: Glass Recycling Coalition

# Regional Glass-“Shed”





# Regional Infrastructure



## Storage bunkers

- 3 key locations in the Pittsburgh metro area
- 25 – 30 ton consolidation

# Collection Methods and Quality

*“The ‘90s called. They want their recycling back.”*  
*“Removing glass from other material is like unscrambling an egg.”*



**Single-stream**



**Source-separated**

# A Model for our Region

- **Known case studies**
- **Where does SWPA fit?**

- Harrisburg
- Northern Virginia
- Ripple Glass

- No solid waste authority
- Goal: More integrated solid waste management
- Multi-municipal Intergovernmental cooperation
- Need public-private/tri-sector partnership



Source: City of Harrisburg



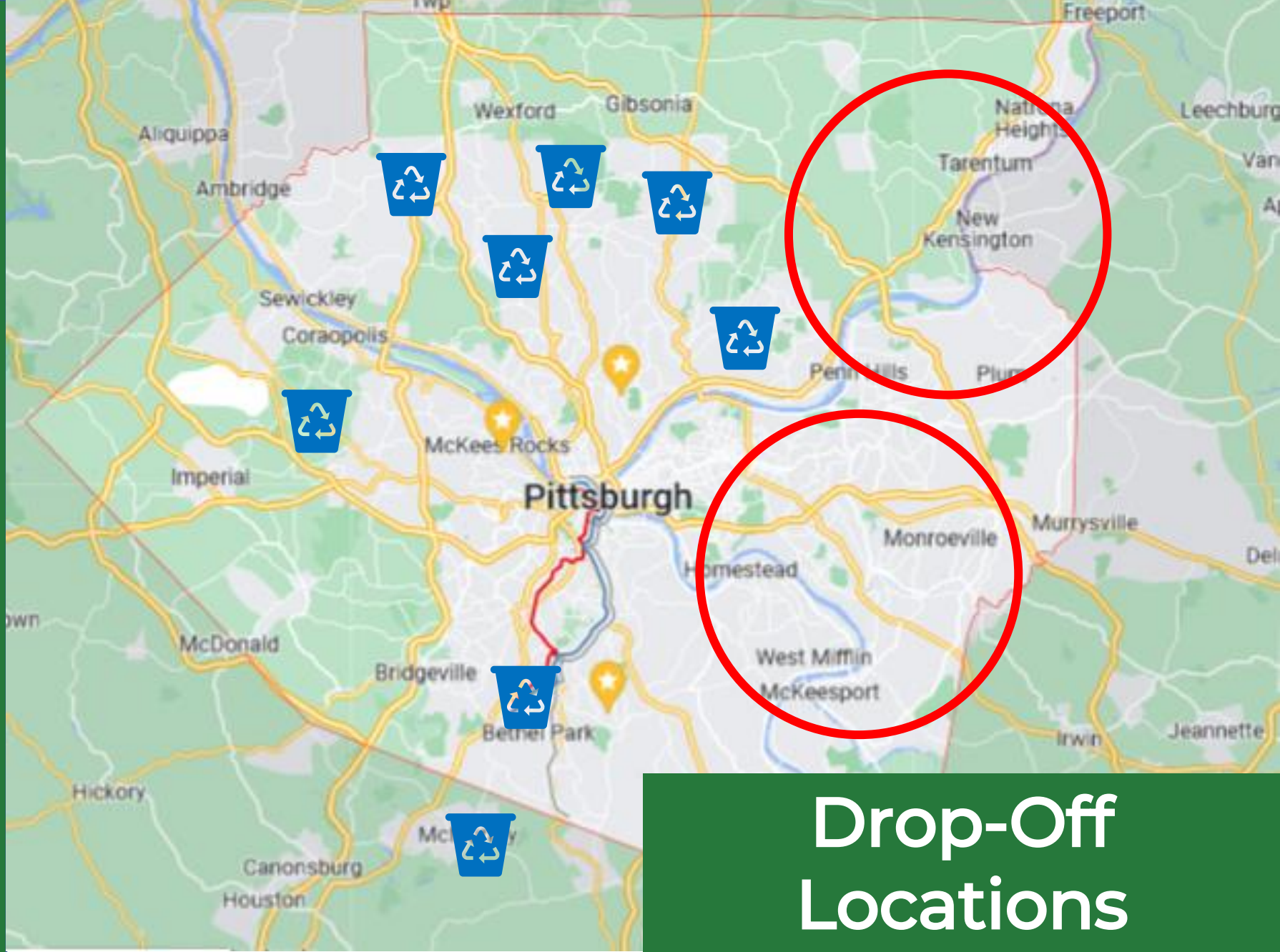
# Traveling Bin Locations





# Drop-Off Locations





# Drop-Off Locations



## ***Traveling Glass Recycling Bin***

- *Weeklong “rental”*
- *Rotating locations*
- *Promote annual schedule*

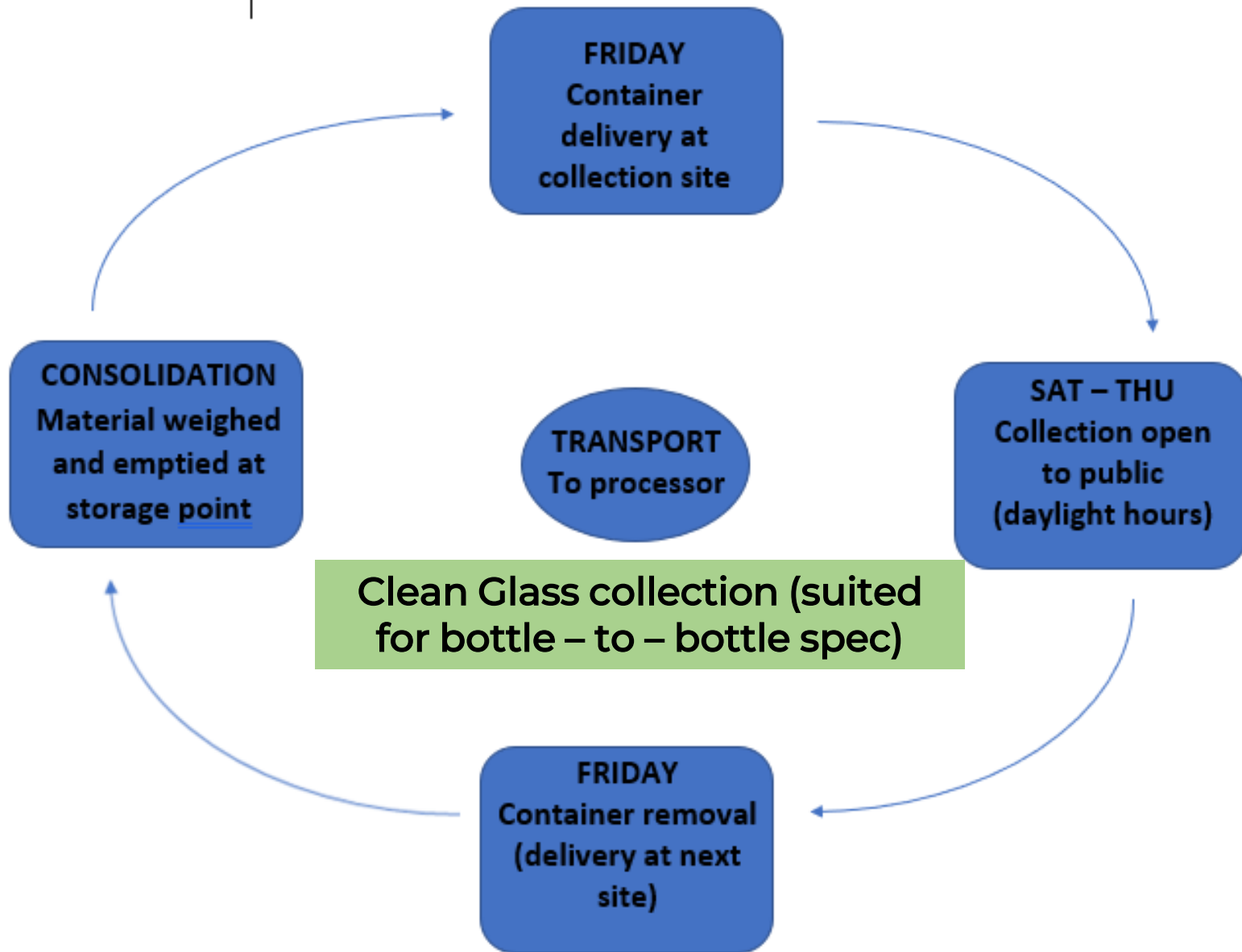


## ***Glass Recycling Collaborative***

- *Permanent Sites*
- *Intermunicipal*
- *Grassroots*



# Operations of the Traveling Glass Bin





# Glass Recycling Collaborative



*A growing regional collaborative among local municipalities*

# What is the Glass Collaborative?



**GLASS  
RECYCLING  
COLLABORATIVE  
of Southwestern PA**



- PA DEP 902 Grant
- Dormont Boro
  - Grant holder
- PRC Contractor
  - Turnkey
- Participants
  - Municipal hosts
  - “Buy-in” fee
  - Cost-sharing
  - Cooperative purchasing

# Costs and Logistics



- Intergovernmental agreement
- Municipal match passed onto collaborative participants
- Dormont takes on all grant admin
- Buy in fee = Cost after DEP match
- PER SITE, not per municipality

| TOTAL SITE COST            | COST AFTER DEP MATCH            |
|----------------------------|---------------------------------|
| CAPITAL = \$13,350         | \$2,670                         |
| EDUCATION, ETC. = \$11,650 | \$2,330                         |
| <b>TOTAL = \$25,000</b>    | <b>PROGRAM BUY-IN = \$5,000</b> |

# Scaling Up

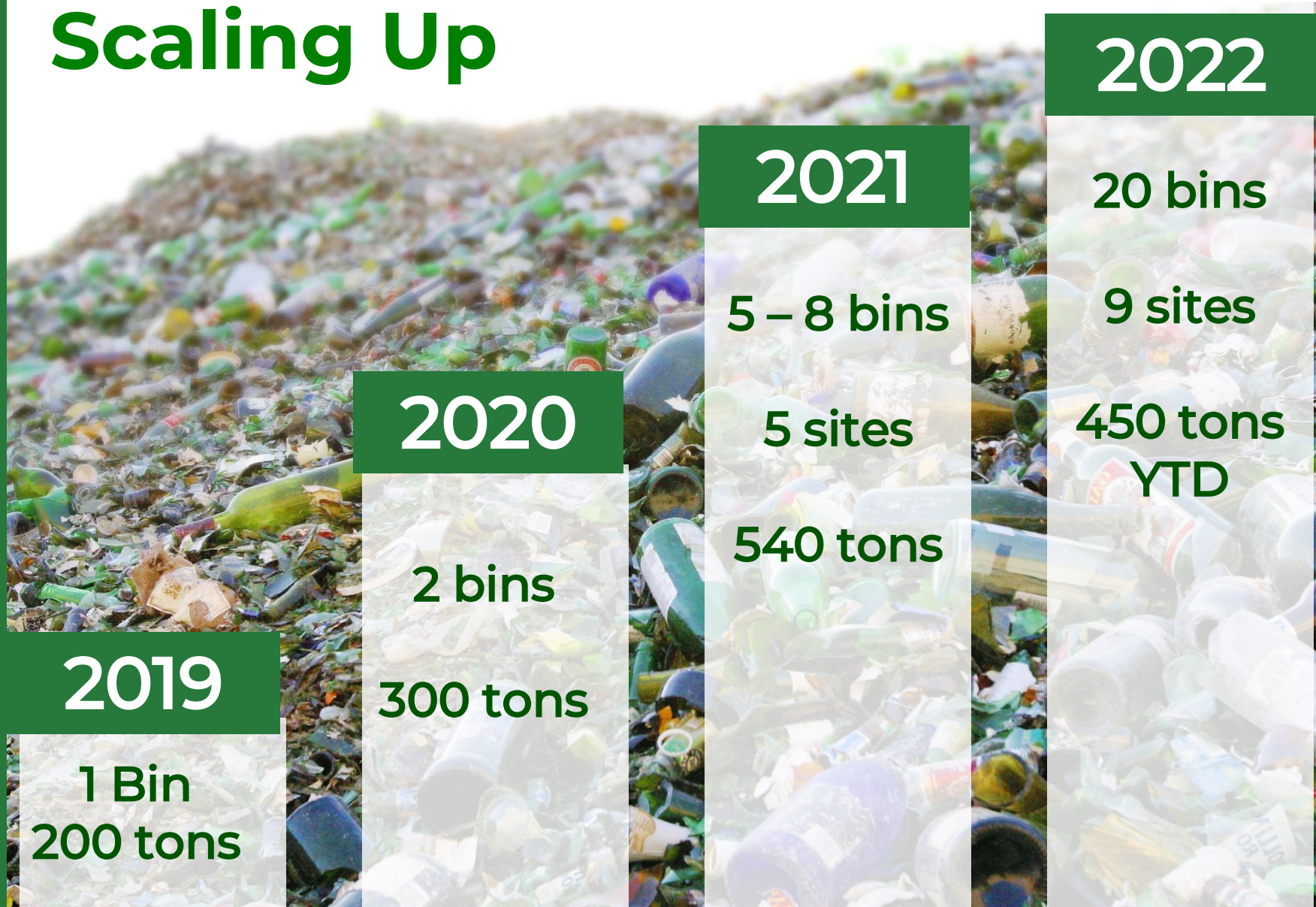


Photo Credit: MN Pollution Control Agency

# Funding Mechanisms & Resources

## 2019 - renewed

- Corporate sponsorship
- Capital Equipment (1)
- Consolidation infrastructure

## 2022 – 2023

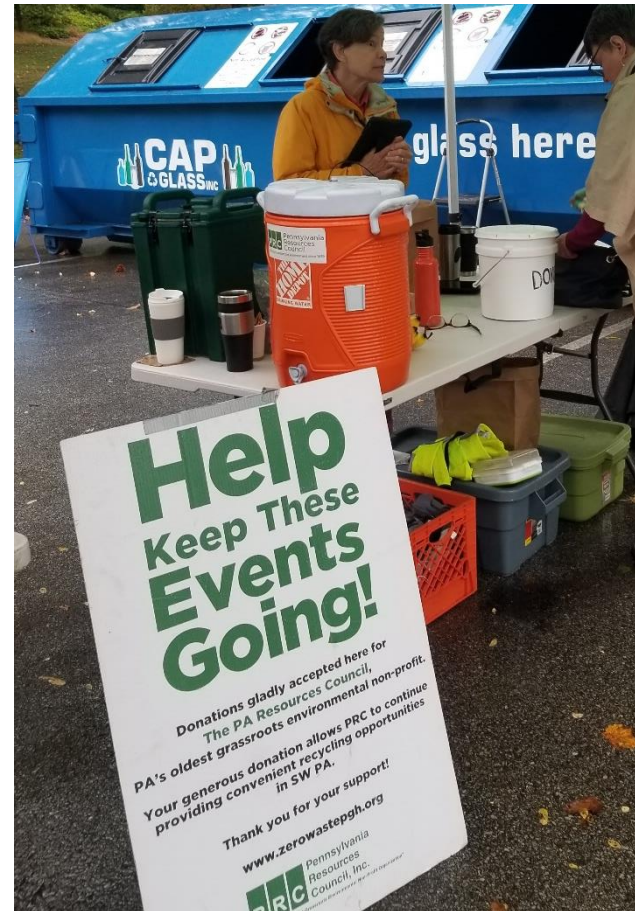
- PA 902 Recycling Grant

## Ongoing

- Municipal fees

## Potential

- Glass Recycling Foundation
- Other industry stakeholders



# Equipment Utilized

- Roll-Off Container
  - 25-yard roll-off
  - Roofed container
  - 4 - 6 tons, mixed glass
- Scale and Scope
  - 2019: One container
  - 2020: 2 – 6 containers
  - 2021: 10 and counting



# Education and Outreach

## GLASS RECYCLING GUIDE



**GLASS**  
RECYCLING  
COLLABORATIVE  
of Southwestern PA

### PARTNERS

Pennsylvania  
Resources Council

CAP Glass

Michael Brothers  
Hauling & Recycling

THIS PROJECT IS  
PARTIALLY FUNDED BY  
A PA DEPARTMENT OF  
ENVIRONMENTAL PROTECTION  
RECYCLING GRANT



GLASS IS  
100% RECYCLABLE

RECYCLING  
GLASS USES  
70% LESS ENERGY  
THAN RAW MATERIALS

## Place GLASS ONLY in collection bin.

All colors accepted • No need to separate colors  
Leave lids/labels on • Take boxes/bags/trash home



Learn more about glass recycling at [prc.org/glass](http://prc.org/glass).



## GLASS RECYCLING COLLECTION GUIDE



### ACCEPTED:

bottles,  
jars and jugs



Place GLASS ONLY in collection bin.  
Bags and boxes used to deliver glass  
must be discarded off-site.

- No need to separate colors
- Leave lids/labels on

Not sure about your item?  
Visit [prc.org/glassrecycling](http://prc.org/glassrecycling).

### NOT ACCEPTED:

- cut glass
- glass bakeware
- mirrors
- porcelain and ceramics
- stemware
- window glass



**Choose Reuse!** Visit [prc.org/reuse](http://prc.org/reuse) for suggested donation outlets.



# Setting Up Sites for Success

## Moving from this...





# Setting up Sites for Success

*To this!*



# What's next: New Locations

## Traveling Glass Bin Schedule in 2022

- 17 collections, ½ county

## Glass Collaborative

- Maximize network

## New Regions

- Neighboring counties
- East/Central PA
- Small Collector Partnerships



# Additional Partnerships

- Owens-Illinois Inc.
- Carry-All-Products (CAP) Glass
- Over 35 Western PA municipalities and other public entities
- Michael Brothers Hauling & Recycling
- Oxford Development Company
- KDKA Radio Pittsburgh



## Q & A



---

## Contact

**Ashley DiGregorio**

[ashleyd@prc.org](mailto:ashleyd@prc.org)

[www.prc.org](http://www.prc.org)

**412-488-7490**

828 W North Ave  
Pittsburgh, PA 15233