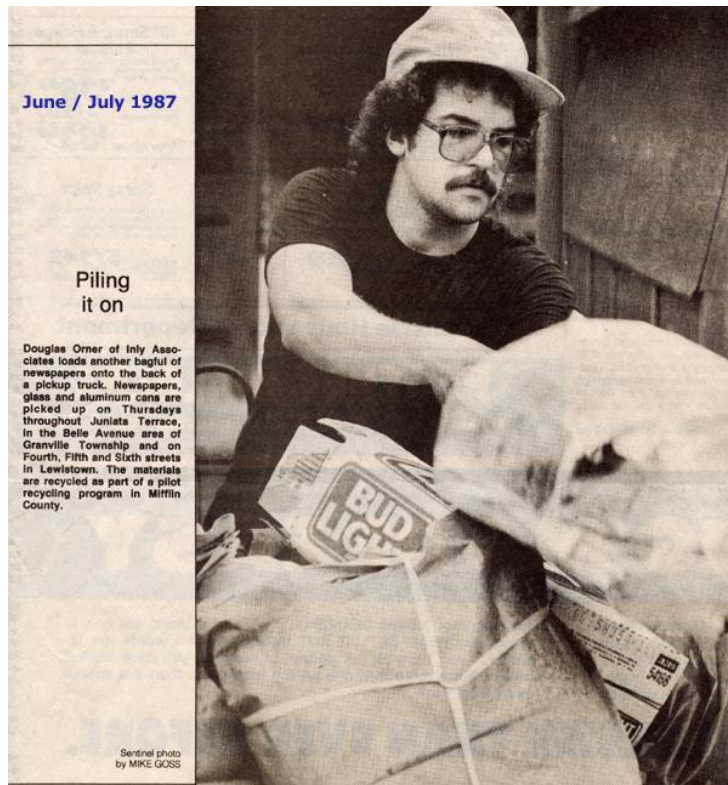


# PRIVATE/PUBLIC PARTNERSHIPS

---

# Working Together

## Doug Orner- PROP



## Holly Vogt

Beaver County Department of Sustainability

10 years in County government

22 years in municipal government

3 years in healthcare

Mom, co-worker, committee member



# DEFINE THE PURPOSE OF YOUR ENTITY

- COMMUNITY
- ENVIRONMENT
- PEOPLE

# WHAT IS THE OBJECTIVE?

## What is the value for each partner?

### Public Relations

tv, newspaper, social media

### Community Engagement

good neighbor, awareness

### Industry Recognition

trademarking, awards,

### Financial Gain

new customers, increased  
revenue, product development







# LOOK WITHIN YOUR OWN WALLS FIRST

Networking opportunities

Information Technology

Engineering and Planning

Public Relations/Communication

Property/Facilities

Equipment, Vehicles



# Recycling Fact Sheet

Phone : 724-770-2068  
Fax : 724-770-2071

BEAVER COUNTY DEPARTMENT OF SUSTAINABILITY & WASTE MANAGEMENT  
Brady's Run Park Recycling Center, 139 Brady's Run Rd-Brighton Twp, Beaver, PA 15009  
Email: hvogt@beavercountypa.gov Website: www.beavercountypa.gov/Depts/WasteMgmt

**OPEN:** Mon., Tues., Thurs. (8:30 AM – 3:30 PM) and Wed. (Noon - 5:00 PM)  
Every 3rd Saturday of the month (8:30 AM – Noon)

MATERIAL	HOW TO PREPARE	DO NOT INCLUDE
<b>Mixed Paper</b> Paperboard (example: cereal, cracker, baking mix, and tissue boxes), Newsprint, magazines, office paper, phonebooks, shredder paper, books junk mail, bagged shredded paper	-Generally clean, dry, flattened -Add loosely to bin (empty bags and boxes into bin) -shredded paper (place in plastic bag then add to bin) -Remove metal + plastic (staples ok)	-No plastic bags other than for shredded paper -No plastic magazine or newspaper sleeves -No metal clamps, bindings and plastics -No garbage, masks, or other infectious items
<b>Corrugated Cardboard</b>	-Flatten and remove easily discarded tape and metal or plastic bindings	-No paperboard items such as cereal, cracker tissue boxes, beverage cartons, egg cartons, any <b>non-corrugated</b> paper materials
<b>Glass</b> food grade bottles and jars	-Generally clean/Rinsed -Remove and dispose of lids -Labels are ok	-No pane glass (windows, picture frames) jars, ceramics, mirrors, crystal, milk glass light bulbs, light shades, TV tubes, auto
<b>Commingle</b> Plastic bottles (#1 or #2 in the recycling symbol on the bottom), aluminum cans, metal and bi-metal cans	-Generally clean + rinsed -Remove and dispose of lids -Flatten easily flattened materials if possible	-No #3-7 plastics (such as yogurt containers, plastic lids, toothpaste tubes, cassette/DVD cases, etc.) -No fuel, pesticide or chemical containers -No plastic bags, glass or paper
<b>Polystyrene</b> (white foam - #6 plastic)	-Clean, white foam only (such as coolers, electronic packing, foam sheets) <b>Break large pieces down</b>	-No packing peanuts, egg cartons, coffee cups, foam meat trays, or other foam wrap.
<b>Scrap Metal</b> Iron, aluminum, brass, tin, stainless steel and copper	-Place in designated Scrap container	-No Freon Appliances. Examples: air conditioners, dehumidifiers -No wire, coat hangers, or fuses
<b>Used Motor Oil, Hydraulic Oil, and Transmission Fluid (residential)</b>	-Report to office before depositing oil in containers	-No other liquid -Do not mix liquids -No fuel mixes, brake fluid
<b>Used Antifreeze (FEE)</b>	-Antifreeze in a sealable container. -See recycling technician for assistance	-No other liquid -Do not mix liquids
<b>Residential Yard Waste (FEE)</b> Tree trimming, brush, grass, leaves	-Contact the Recycling Center 724-770-2064/, small loads - see recycling technician	-No commercial materials -no food waste -NO STUMPS or branches
<b>Electronics (FEE)</b> TV's, computers, VCR's, printers, etc.	-Contact the Recycling Center 724-770-2064	-Non-electronic items -Dismantled TV's
<b>Fluorescent Bulbs/Tubes (FEE)</b>	-Unbroken, transport safely	-No broken bulbs
<b>Paint (FEE)</b>	-Small quantities of latex paint	-Latex only
<b>Used Automobile &amp; Rechargeable Batteries</b>	-See recycling technician	-No household batteries -Return to manufacturer

DROPPING OFF MATERIAL WHEN CENTER IS CLOSED IS SUBJECT TO A \$50 FINE PER CENTER UNDER ELECTRONIC SURVEILLANCE

Beaver County  
Department of  
Sustainability &  
Waste Management  
469 Constitution Blvd.  
New Brighton, PA 15066

Phone:  
Office 724-770-2068  
FAX 724-770-2071  
Recycling 724-770-2064  
Education 724-770-2067



Recycling Center  
(in Brady's Run Park)  
South Drive  
Beaver, PA 15009

**Recycling Center Hours:**  
Mon 8:30AM – 3:30PM  
Tues 8:30AM - 3:30PM  
Wed Noon – 5:00PM  
Thurs 8:30AM – 3:30PM  
Fri Closed  
3rd Sat of each month  
8:30AM – Noon  
(Closed Holidays)



- What we accept:**
- Mixed Paper
  - Corrugated Cardboard
  - Glass (clean bottles & jars)
  - Commingle (#1 & #2 plastic bottles, jugs, tin/bi-metal cans, aluminum cans/foil packaging)
  - Clothing/Shoes
  - Used Motor Oil
  - Scrap Metal
  - Automotive Batteries
  - \* Yard Waste (brush/grass/leaves)
  - \* Electronics
  - \* Fluorescent Bulbs
  - \* Used Anti-freeze
  - \* Latex Paint (small quantities)
- \* Please note: A recycling fee is required for the items marked above—Cash or Check
- Also: We do not accept items containing Freon. Contact a local scrap yard.
- We sell compost too!**

Thank You  
Beaver County!



# COMMUNITY

## Safely dispose of common household chemicals

### SPONSORS



Colcom  
Foundation



UPMC LIFE  
CHANGING  
MEDICINE



LANXESS  
Emerging Chemistry



### BEAVER COUNTY

## Bradys Run Park Recycling Center

**Saturday, April 30, 2022**  
9 am - 1 pm

### 2022 FEE STRUCTURE

\$20 fee covers disposal of up to 10 gallons/50 pounds of the following materials:

- aerosol cans
- automotive fluids  
motor oil, transmission fluid,  
antifreeze, brake fluid
- batteries
- camp fuel/small propane bottles
- chemistry sets
- compact fluorescent bulbs (CFLs)
- electronic cigarettes
- gasoline and kerosene
- household cleaners  
ammonia, drain openers,  
acid cleaners, oven cleaners
- mercury thermometers
- paint products  
latex, oil based, alkyd based,  
arts/crafts chemicals, rust preservatives,  
creosote, water sealers, paint thinners,  
furniture strippers
- pesticides/herbicides  
rodent killers, insecticides, weed  
killers, mothballs, fertilizer
- photo chemicals
- pool chemicals
- smoke detectors

- Oversized loads will be subject to additional charges at the discretion of on-site staff.
- **ADDITIONAL FEES:** \$12 per fire extinguisher; \$15 per pound of liquid mercury.

### EVENT DETAILS

- PRC accepts all forms of payment.
- Place all items in car trunk/truck bed.
- PRC follows all federal/state/local health and safety guidelines. Visit website for details.



### ADVANCE REGISTRATION REQUIRED

[prc.org/HHWregistration](http://prc.org/HHWregistration) • 412-488-7490 x1



JOIN OUR  
EMAIL LIST

# PEOPLE

## GLASS COLLECTION FOR BEAVER COUNTY RESIDENTS

### Eyeglasses

The **Through Beaver County's Lens: Glass to Glass** program collects eyeglasses, sun glasses, and reading glasses for reuse. Collected eyewear are then shared with local doctors or sent abroad through *Mission Vision* for use in developing countries.

Keep eyewear found for reuse separate from glass bottles and jars.



### Glass Bottles & Jars

**ACCEPTED:** all colors of glass bottles and jars **ONLY**

- Caps, lids and labels are acceptable
- Empty and clean all containers


**NOT ACCEPTED:**

- window glass • light bulbs
- drinking glasses / stemware • TVs
- dishware • ceramics • mirrors
- all other recyclables collected on Tuesdays and Thursdays




  

[www.BeaverCountyPA.gov/Depts/WasteMgmt](http://www.BeaverCountyPA.gov/Depts/WasteMgmt) | 724-770-2068




## EYEGLASS COLLECTION

For Beaver County Residents  
Supporting the senior project of a South Side high school student

 **BCAB**  
Beaver County  
Association for the Blind

The **Through Beaver County's Lens: Glass to Glass** program collects eyeglasses, sunglasses, and reading glasses for reuse. Collected eyewear are then shared with local doctors or sent abroad through *Mission Vision* for use in developing countries.

Collections will be held at the **Hazardous Waste Collection event on Saturday, April 30 from 9am-1pm at Brady's Run Park.**



724-770-2068 [www.BeaverCountyPA.gov/Depts/WasteMgmt](http://www.BeaverCountyPA.gov/Depts/WasteMgmt)





# ENVIRONMENT

## Drop Off Locations in Beaver County, PA\*

### **NOVA Chemicals**

400 Frankfort Rd  
Monaca, PA 15061  
724-770-4322  
724-770-5502

### **Antline**

108 Midway Beaver Rd  
Industry, PA 15052  
724-643-4400

### **Bradys Run Recycling Center**

Bradys Run Park  
Brighton Township, PA 15010  
724-770-2064

### **Antoline Park *New!***

Marshall Rd & Jackson Ave  
Monaca, PA 15061  
724-775-9600

### **Monaca Borough Building *New!***

298 Pennsylvania Ave  
Monaca, PA 15061  
724-775-9600

### **More locations:**

[www.recyclemoreplastic.org/  
plastics/eps\\_map](http://www.recyclemoreplastic.org/plastics/eps_map)

\*Call ahead to schedule large deliveries.

The NOVA Chemicals logo is a registered trademark of NOVA Brands Ltd.; authorized use.

The Foaminator® 2016 NOVA Chemicals Inc.

Got Foam?® is a registered trademark of NOVA Chemicals Inc.

The Foaminator Design™ is a trademark of NOVA Chemicals Inc.

## Helpful EPS Resources

### **EPS Industry Alliance**

[Epspackaging.org](http://Epspackaging.org)

**DART Container Corporation – Includes the RecyclaPak program for recycling foam cups**  
[Dartcontainer.com](http://Dartcontainer.com)

**A Home for Foam / Supporting the growth of foam recycling**  
[Homeforfoam.com](http://Homeforfoam.com)

**Recycling Bin – Information on EPS collection bins**  
[www.recyclingbin.com/Foam-Collection-Bin](http://www.recyclingbin.com/Foam-Collection-Bin)

**Foam Cycle**  
[Foamcycle.com](http://Foamcycle.com)

**Plastics buyers listing**  
[PlasticsMarkets.org](http://PlasticsMarkets.org)

**RecycleMorePlastic.org – interactive map to find collection programs near you**  
[www.recyclemoreplastic.org/plastics/eps\\_map](http://www.recyclemoreplastic.org/plastics/eps_map)



400 Frankfort Rd., Monaca, PA 15061

## Got Foam?®

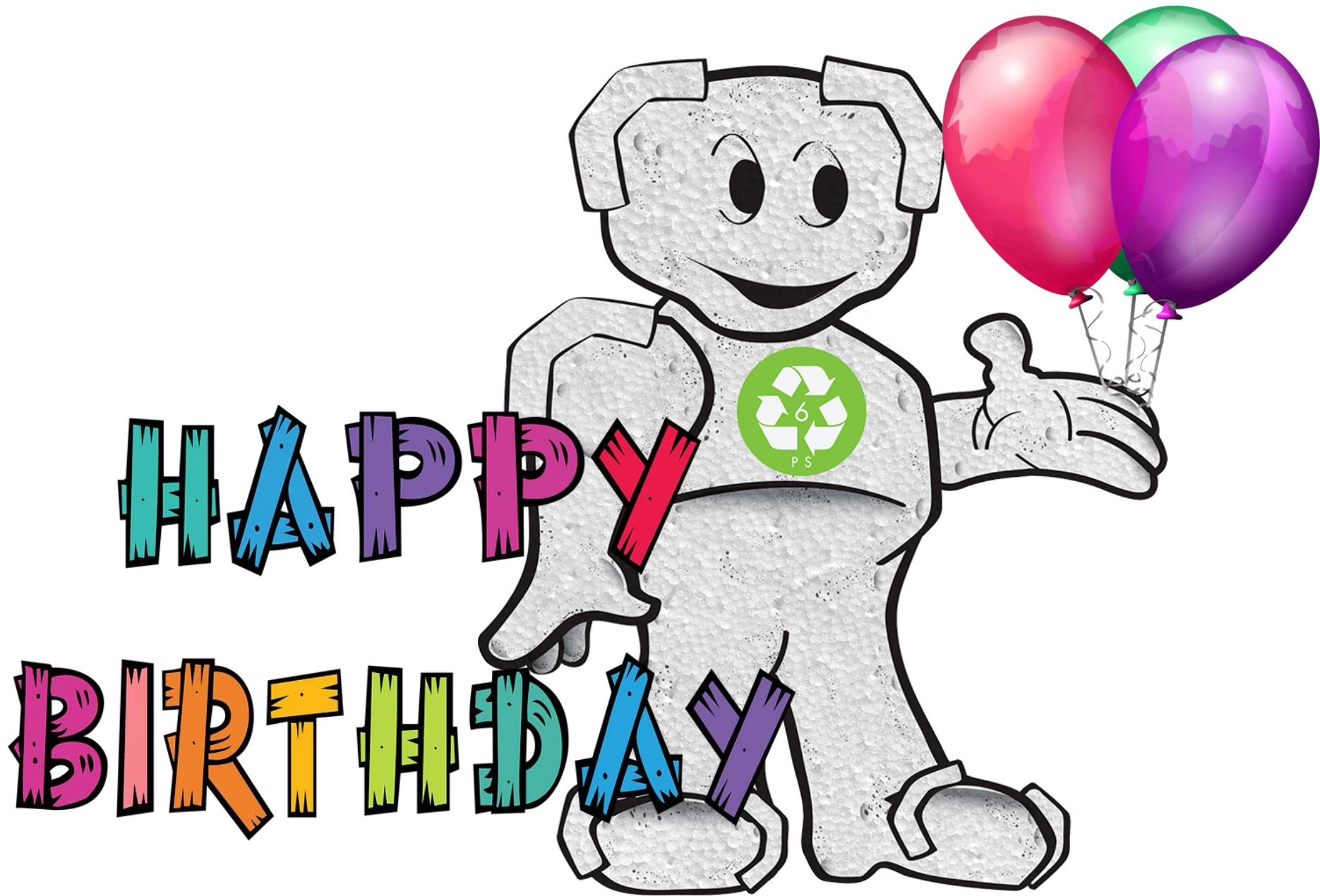
Thanks to NOVA Chemicals and partners — you can drop off clean **EPS FOAM** to be recycled!



## What is EPS Foam?

**Expanded Polystyrene (EPS)** is the white packaging foam used to protect computers, televisions and appliances — and it's what coolers are made of. Look for the #6 recycle symbol.





HAPPY

BIRTHDAY





*Chick-fil-z*



Now You Can Recycle EPS Foam

# Here's how it works

## Our Process

**1** You drop off polystyrene at one of our drop off locations in a **Recycling Bin** or **Super Sack**.



**2** NOVA Chemicals collects and compresses

your polystyrene into large blocks with its densifier.

Blocks are shipped to recyclers.



**3**

Recyclers turn blocks into plastic pellets that are used to **make new items** such as surf boards, rulers, picture frames, molding, hangers, outdoor furniture, glue, yo-yos and more!



## Drop off Guidelines:

- **Packaging foam only** accepted!
- Must have **#6 recycle symbol**
- Foam must be **clean and dry**
- **Remove** all tape, paper, or staples
- Place foam in **Recycling Bin** or **Super Sack** (pictured left)

**NOT ACCEPTED:** foam peanuts or food containers (i.e. clam shells, cups, plates).

**NO NON-EPS FOAM** - furniture cushions are not EPS Foam.



# Beaver County adds recycling personnel thanks to Shell

By Daveen Rae Kurutz  
dkurutz@timesonline.com

BEAVER — Holly Vogt hopes the children will lead the way.

A \$225,000 grant from Shell Chemicals will fund a new position in Beaver County Waste Management that will send employees into local schools to help start recycling programs. Vogt, director of the county waste management department, said the program will roll out in phases starting this fall.

“What we’re attempting to do at this point is give a solid foundation,” Vogt said. “Hopefully students take it home to their families, neighbors and community.”

Shell Chemicals awarded the three-year grant to the county in February. In addition to funding an education program, the grant will allow the recycling center to expand its hours and provide recycling bins for the main corridors of Beaver, Monaca and Potter Township, Vogt said.

The Beaver County Salary Board officially hired the new employee this week. Quinn Metheny has worked for Beaver County Public Works, but has a background in education, Vogt said.

Metheny and Vogt will be sending surveys

out to each of the county’s 14 superintendents to gauge what recycling looks like in their districts.

“It seems as though some of them do not recycle, some recycle a little and some do not recycle well at all,” Vogt said. “But that’s kind of consistent with what we’ve seen across Beaver County.”

For the first year, Metheny will focus on taking the districts back to basics, Vogt said — teaching districts and students what recycling looks like and how it can be done well.

Years two and three will bring the community into the program through competitions and contests.

“Whether it’s ‘who can bring in the most cardboard,’ or ‘the school is having a recycling drive,’ we’re hoping to spread the word in the community,” Vogt said. “Hopefully, we’ll be using some social media as well.”

Vogt said the grant has been a godsend.

“One of the biggest factors that we have here is limited resources,” she said. “I’m one person, trying to run as many programs as I can ... I feel extremely grateful that (Shell) saw something in our department and wanted to partner with

Rally Support for  
your Mission  
including the  
troops!

# TAKEAWAYS

What is the value that you bring your organization/other departments?

What value do you bring to your community/businesses- Styropek, Shell, Penn Dot, UPS-electronics?

Connect your resources: gaylord boxes (supplies), volunteers (manpower), donations, sponsorships

You can't get a YES without asking. Not asking always equals a NO.

Be creative.

Network and always keep your eyes open for new opportunities.



Questions?

Doug Orner  
Professional Recyclers of  
Pennsylvania  
[dorner@proprecycles.org](mailto:dorner@proprecycles.org)  
(717) 441-6049 x3

Holly Vogt  
Beaver County Department of  
Sustainability  
[hvogt@beavercountypa.gov](mailto:hvogt@beavercountypa.gov)  
724-770-2068